

Instruction Manual

JSL-74 General Purpose Timer

Version 1.4 (October, 2017)

1. Overview

This JSL-74 timer can count from 0.01 second to 9999 minutes. Operating function modes include single delay, double delay, and cycle delay. It can count-down or count-up. The timer can be activated automatically when powering up, by front key pad, or via remote switch.

2. Specification

- Timer range: 0.01 second to 9999 minutes.
- Timer mode: single delay, double delay, cycle delay.
- Timer trigger: power on, front key pad, or remote switch.
- Timer accuracy: < 1 s/day.
- Power supply: 90 - 260 V AC or DC.
- Power consumption: < 2 W.
- Relay output: 7 A @ 240 VAC, 10 A @ 120 VAC and 24 VDC.
- Average relay life: 100,000 times at rated current.
- Operating temperature: 0 - 60°C.
- Humidity: 0-95% RH.
- Panel cutout: 44.5 x 44.5 mm.
- Outer dimension: 48 x 48 x 85 mm.

3. Front Panel

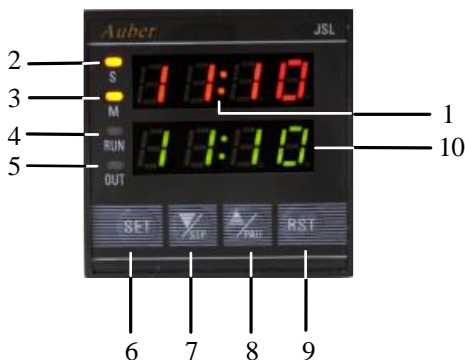


Figure1. Front panel of JSL-74 timer.

1. Time unit indicator: turns on when time format is MM:SS (Minutes: Seconds) or HH:MM (Hours: Minutes) and flashes when the timer is running; turns off when time unit is M (Minutes) or S (Seconds).
2. Timer indicator for seconds: turns on when the time format is MM:SS or S; turns off when the time format is HH:MM or M.
3. Timer indicator for minutes: turns on when the time base is HH:MM or M; turns off when the time base is MM:SS or S.
4. RUN indicator: turns on when timer is running; blinks when timer is paused; turns off when timer is stopped.
5. OUT indicator: turns on when relay is on; turns off when relay is off.
6. SET key: press it momentarily to set T1 and T2; press and hold it for 3 second will enter the programming mode. In programming mode, press it momentarily will go to next parameter setting. This key is disabled when timer is running.

7. Down key / STP key: reduce the value in the programming mode; when the timer is running, press it to stop the timer. (For special stop function in single delayed on mode, please see note 1 on page 2 for details).
8. Up key / PAU key: increase the value in the programming mode; when timer is running, press and hold it will pause the timer; the timer will continue running after this key is released.
9. RST key: reset key. When the timer is running, press it will restart the timer. If "RUN" parameter is set to RST, press it will start the timer after powered up.
10. LED digital display: during normal operation as a timer, the top displays the actual time; the bottom displays the preset value; in programming mode, the top displays the parameter, and the bottom displays the parameter value.

4. Terminal Assignment

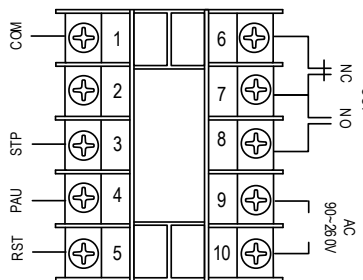


Figure 2. Terminal assignment of JSL-74.

Details:

1. Power for the timer needs to be connected to terminal 9 and 10. The voltage should be in the 90 to 260VAC range.
2. Terminal 6, 7, and 8 are for relay output. Terminal 6 is normally-closed (NC) contact. Terminal 8 is normally-open (NO) contact. Terminal 7 is common contact of the terminal 6 and 8. When the relay is energized (or when the OUT LED is on), terminal 8 connects to terminal 7, and terminal 7 disconnects terminal 6; When the relay is NOT energized (or when the OUT LED is off), terminal 6 connects to terminal 7, and terminal 7 disconnects terminal 8. The relay is a "dry switch" that does not provide power by itself. Please see the wiring examples in Section 7.
3. Terminal 5 is the reset terminal that has the same function as the RST key in the front panel. Please see a note at the end this section.
4. Terminal 4 is the pause/mute terminal that function the same as the "/PAU" key in the front panel.
5. Terminal 3 is the stop terminal that function the same as the "/STP" key in the front panel.
6. Terminal 1 is the common contact for the terminal 3/4/5. There are two ways to operate terminal 3, 4 and 5.
 - 6.a) Connecting a normally open (NO) momentary push button switch between the terminal (3, 4 or 5) to the COM (1). Please note, the function starts when you release (or open) the button of the switch, not when you press down the switch. See Figure 5.
 - 6.b) Connecting a DC logic signal (TTL or CMOS or voltage in the range from 3 to 30 VDC) between the terminal (3, 4 or 5) to the COM (1). Please note, the

function is rising-edge triggered. The logic signal should normally be at high level. The function starts when the signal goes from low to high. If you have an inverted logic signal, you need to connect a NPN transistor between terminal and COM; add 10Kohm resistor to the gate for signal input. See Figure 6.

7. Terminal 2 is reserved for customized applications.

Note for terminal 3, 4, and 5. The function of all these terminals is accomplished by the rising phase of control signal. If the control signal is from a momentary NO switch that is connected to the terminal, the action starts when switch is released (from close to open). When the control signal is from another digital device, the action starts when voltage goes from low to high.

5. How to Set the Timer and Relay Delay Time T1/T2

Press “SET” key momentarily, T1 will show up at the top display. Use Up and Down key to set the value. Press SET again to set the T2 (only for delayed interval or cycle mode). Press SET key confirm the setting and exit the timer setting mode.

When adjusting the time, each time the Up or Down key is pressed, the value will increase by one unit. But if you press and hold it, the value will continuously increase, as the holding time increases, the speed of number increasing will accelerate. You can use this feature for large number increment. When the number is getting close to desired value, release the key. Then, press it momentarily for fine setting adjustment.

6. Programming

Press SET key for 3 seconds to enter programming mode. For each parameter setting, use up/down key to select different programming values. Press SET key to confirm and move on to next parameter. See Figure 3 for the procedure. For the definition of each programming value, see following section.

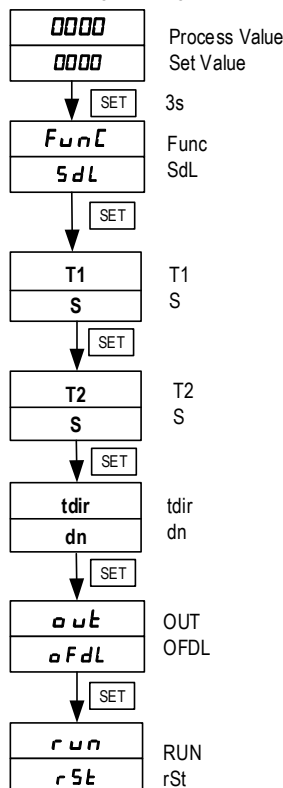


Figure 3. Flow chart of how to program JSL-74.

Definition of Programming Values

Func, timer operating function mode.

SdL (single delay): relay turns on at the beginning of relay delay time T1 (OFDL); relay turns on at the end of relay delay time T1 (ONDL). It will not change until the timer is reset or repowered again. In Single Delay ON mode, a special parameter for stop function, STOP will show up in the parameter menu. For details please refer to note1 below.

dint (delayed interval): relay turns on at the end of T1 time delay then off at the end of T2 time delay (OFDL); relay turns off at the end of T1 time delay then on at the end of T2 time delay (ONDL). There is no repeat.

CYCL (cycle): repeat relay on and off in cycle. Relay turns on at the end of T1 time delay then off at the end of T2 time delay (OFDL); relay turns off at the end of T1 time delay then on at the end of T2 time delay (ONDL). It will repeat this cycle until power is off.

T1 or T2, timer range.

S: 0.01 s ~ 99.99 s.

M:S: 1 s ~ 99 m 59 s.

M: 1 m ~ 9999 m.

H:M: 1 m ~ 99 h 59 m.

tdir, timing direction.

up: counting up.

dn: counting down.

OUT, relay output mode.

OFDL (off delay): relay will be on at the start of timer and off when time reach the set point.

ONDL (on delay): relay will stay off at the start of timer and on when time reach the set.

RUN, timer starting run mode.

PU (power up): timer starts when powered up.

rSt (reset): timer starts when reset button is pressed and released

Note 1: Running the single delayed on mode.

When running the Single Delay On mode, depending on the applications, user may want the relay to stay at off (initial state), or, stay on (final state) when the operation is interrupted by stop function. Here are two examples. A) Some user uses the timer to turn on a buzzer at the end of a process for notification purpose. He wants to be able to disable the buzzer (change to initial state) by simply pushing a button once he acknowledged the notification. B) Some user wants to delay the process of turning on an oven. But sometimes, he may want to cancel the delay (change to the final state) to start the oven by pushing the stop key. In order to satisfy these two conflict requirements, a special parameter for stop function, STOP will show up in the parameter menu when both ONDL (on delay) and SDL (single delay) are selected, STOP can be selected as 0 (default) or 1. When it is set to 0, during the delay, stop signal will set relay to the final state (pulled-in). When it is set to 1, during the delay, stop signal will set the relay to the initial state (dropped-out). When the time delay is finished and relay pulled in, user can reset the relay to the initial state by sending a stop signal, regardless of the STOP setting.

7. Wiring Examples

1) Signal controlled by switches.

Power (120 or 240V AC) is sent to terminal 9 and 10. The external reset (RST) and pause (PAU) switch should be momentary type. They are needed only if you want to control the timer remotely. Otherwise, you can use the front keys on the timer. These switches can also be replaced with a control signal from computer or other control devices. **The alarm speaker used in this example is also optional. It is to show how to wire the output. You can substitute it with any output such as a coffee grinder.** The output terminals (#6, 7 and 8) are from a "C form" internal relay. It is a dry switch that does not provide the power by itself. In this case, the alarm is powered by the 120VAC. The external switch connected to the alarm is for disabling the sound if needed.

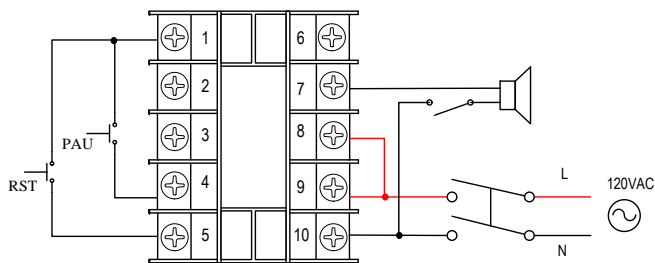


Figure 4. Wiring example of JSL-74.

2) Signal controlled by DC logic signal.

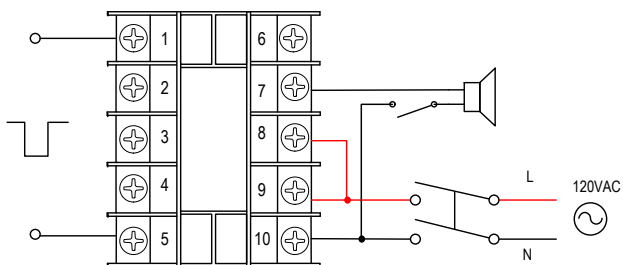


Figure 5. Rising-edge triggered signal.

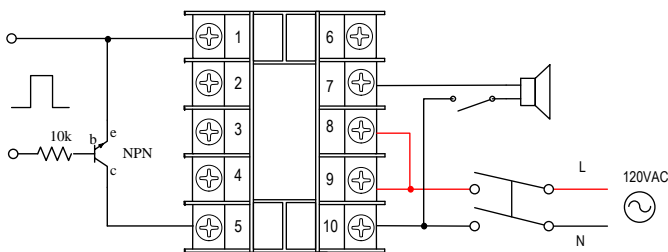
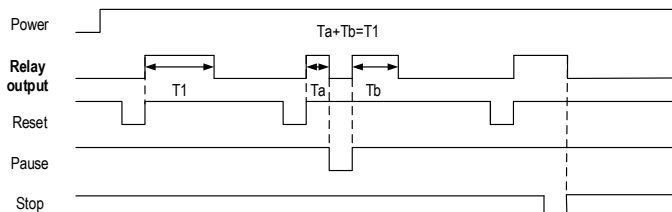


Figure 6. Inverted logic signal.

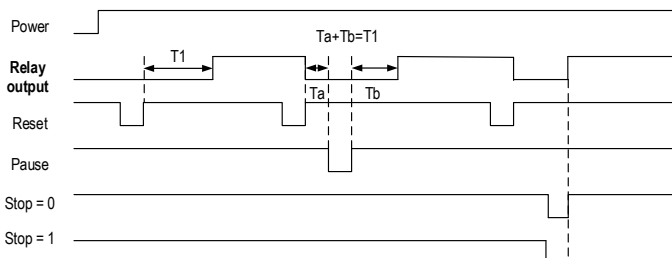
8. Timing Diagrams

Following diagrams show relay output ON/OFF time under different relay output modes and operating function modes. Please note: 1) "RUN" is set to "rSt" in following examples, powering up to start the timer is not discussed here. 2) Timer starts counting from the moment when reset key/switch is released or input (TTL) signal is from low to high. 3) Timer display stops

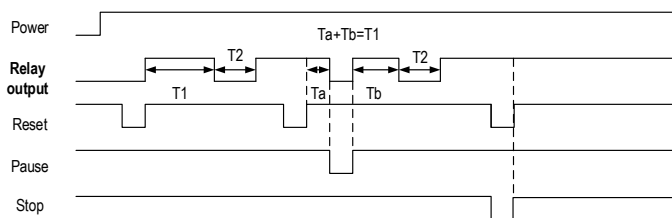
counting as soon as stop key/switch is pressed (from high to low), but relay output will only be triggered when stop key/switch is released (from low to high).



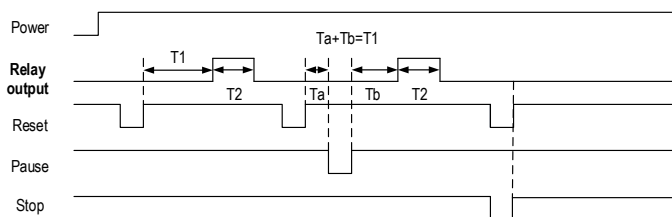
A. single delay (delay off).



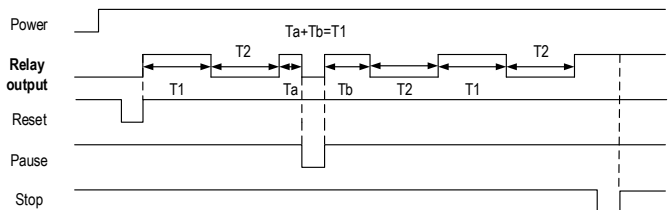
B. single delay (delay on) (for stop function please see Note 1 on page 2 for details).



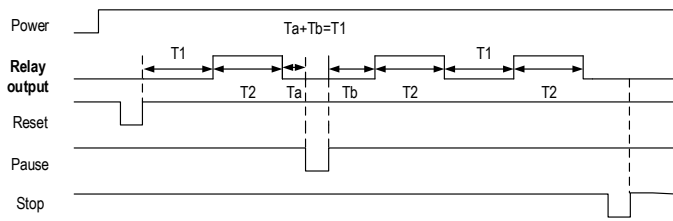
C. delay interval (delay on).



D. delay interval (delay off).



E. cycle (delay on).



F. cycle (delay off).

Auber Instruments

5755 North Point Parkway, Suite 99

Alpharetta, GA 30022, USA

www.auberins.com

E-mail: info@auberins.com Tel: 770-569-8420

Copyright 2007-2017, Auber Instruments All Rights Reserved.

No part of this manual shall be copied, reproduced, or transmitted in any way without the prior, written consent of Auber Instruments. Auber Instruments retains the exclusive rights to all information included in this document.